



# Far West Design Review District

## Agenda

8:00 a.m., Wednesday, April 11, 2012  
St. Mel Catholic Church Rectory, 14436 Triskett Road

---

8:00am **1. Case # FW 2012-012 – Dunkin' Donuts Rehab and New Signage (N)**

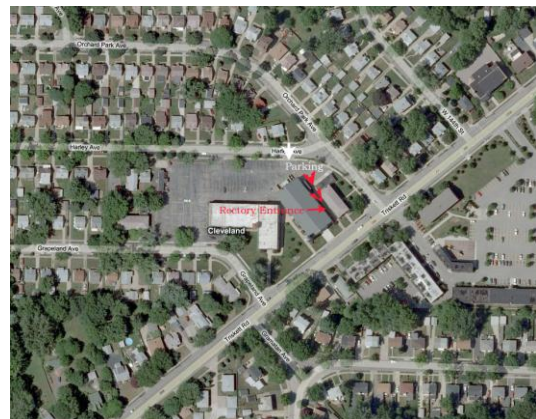
Project Representative: Bryan Matthews, ADA Architects

For First-Timers to our Far West Design Review meetings:

St. Mel's is on Triskett Road; the two main roads that cross Triskett within the general vicinity are West 140<sup>th</sup> Street to the east and Warren Avenue to the west. From Triskett, you turn north on Orchard Park Ave. and then a quick left onto Harley Ave.

There are only three parking spaces in the small lot behind the rectory, which we are free to use. But if they are filled, you are advised not to park in the larger lot behind the adjacent school, but on Harley Avenue instead. (Sometimes they will allow you to park in the school lot but they have to move the orange cone for you).

St. Mel's Rectory is the smaller building adjacent to Orchard Park. It has a pedestrian walkway off the rear lot which is shown by the red arrows in the photo.



C = will need to appear on City Planning Commission agenda  
L = will need to appear on Landmarks Commission agenda  
N = will not need to appear on either of the above agendas