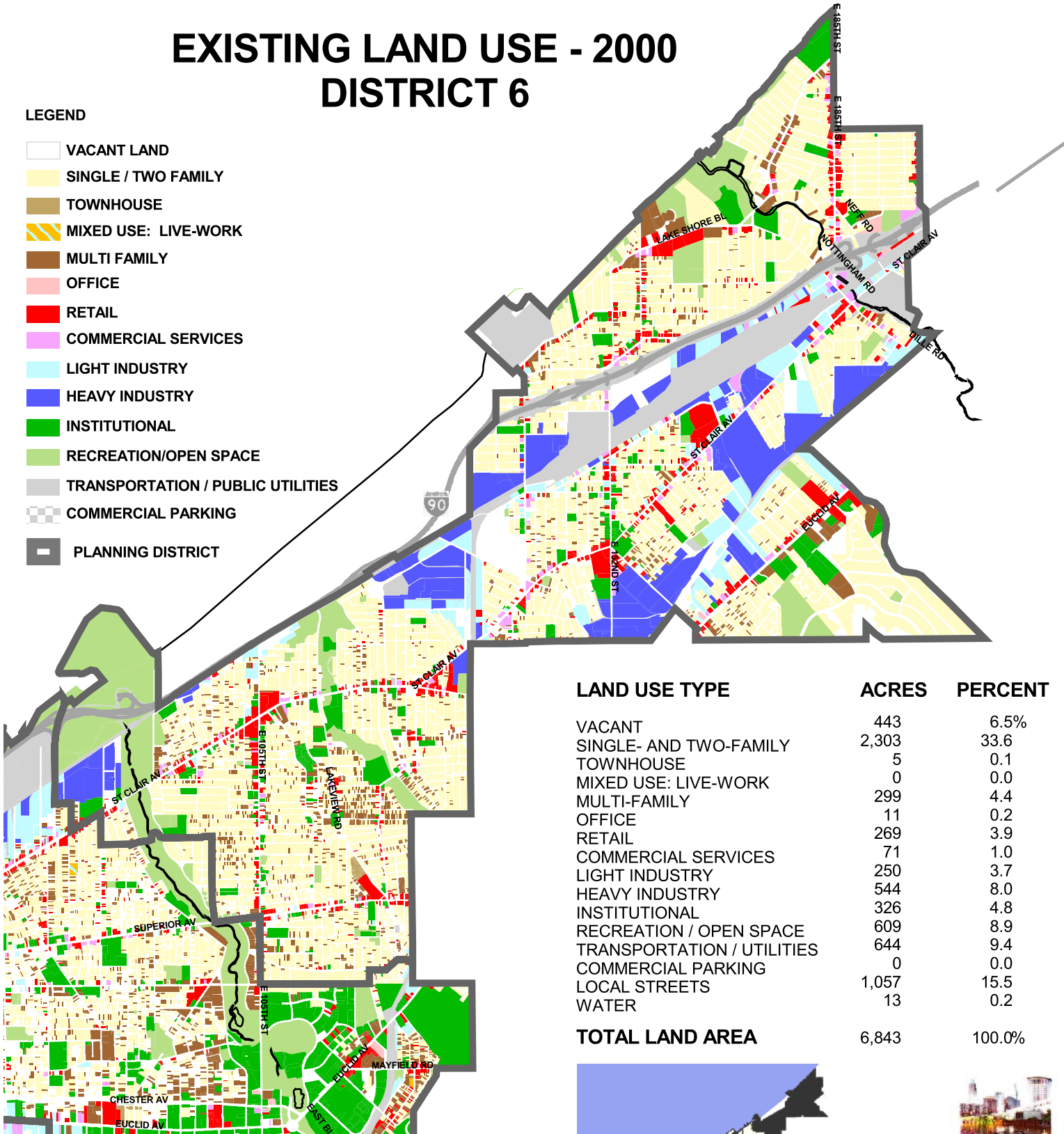




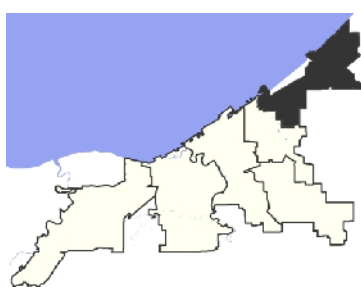
EXISTING LAND USE - 2000 DISTRICT 6

LEGEND

- VACANT LAND
- SINGLE / TWO FAMILY
- TOWNHOUSE
- MIXED USE: LIVE-WORK
- MULTI FAMILY
- OFFICE
- RETAIL
- COMMERCIAL SERVICES
- LIGHT INDUSTRY
- HEAVY INDUSTRY
- INSTITUTIONAL
- RECREATION/OPEN SPACE
- TRANSPORTATION / PUBLIC UTILITIES
- COMMERCIAL PARKING
- PLANNING DISTRICT



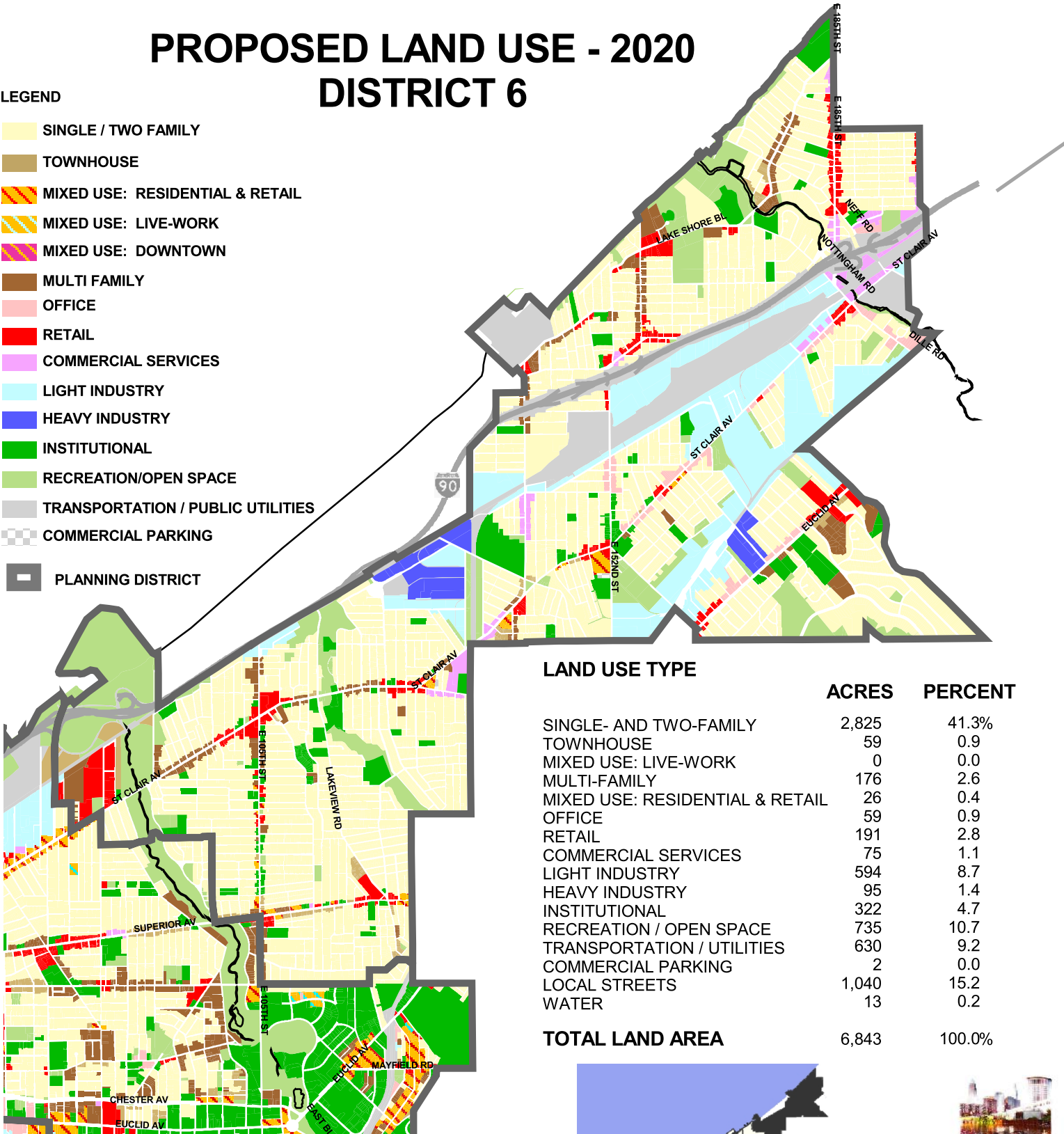
LAND USE TYPE	ACRES	PERCENT
VACANT	443	6.5%
SINGLE- AND TWO-FAMILY	2,303	33.6
TOWNHOUSE	5	0.1
MIXED USE: LIVE-WORK	0	0.0
MULTI-FAMILY	299	4.4
OFFICE	11	0.2
RETAIL	269	3.9
COMMERCIAL SERVICES	71	1.0
LIGHT INDUSTRY	250	3.7
HEAVY INDUSTRY	544	8.0
INSTITUTIONAL	326	4.8
RECREATION / OPEN SPACE	609	8.9
TRANSPORTATION / UTILITIES	644	9.4
COMMERCIAL PARKING	0	0.0
LOCAL STREETS	1,057	15.5
WATER	13	0.2
TOTAL LAND AREA	6,843	100.0%





PROPOSED LAND USE - 2020 DISTRICT 6

- LEGEND**
- SINGLE / TWO FAMILY
 - TOWNHOUSE
 - MIXED USE: RESIDENTIAL & RETAIL
 - MIXED USE: LIVE-WORK
 - MIXED USE: DOWNTOWN
 - MULTI FAMILY
 - OFFICE
 - RETAIL
 - COMMERCIAL SERVICES
 - LIGHT INDUSTRY
 - HEAVY INDUSTRY
 - INSTITUTIONAL
 - RECREATION/OPEN SPACE
 - TRANSPORTATION / PUBLIC UTILITIES
 - COMMERCIAL PARKING
 - PLANNING DISTRICT



LAND USE TYPE	ACRES	PERCENT
SINGLE- AND TWO-FAMILY	2,825	41.3%
TOWNHOUSE	59	0.9
MIXED USE: LIVE-WORK	0	0.0
MULTI-FAMILY	176	2.6
MIXED USE: RESIDENTIAL & RETAIL	26	0.4
OFFICE	59	0.9
RETAIL	191	2.8
COMMERCIAL SERVICES	75	1.1
LIGHT INDUSTRY	594	8.7
HEAVY INDUSTRY	95	1.4
INSTITUTIONAL	322	4.7
RECREATION / OPEN SPACE	735	10.7
TRANSPORTATION / UTILITIES	630	9.2
COMMERCIAL PARKING	2	0.0
LOCAL STREETS	1,040	15.2
WATER	13	0.2
TOTAL LAND AREA	6,843	100.0%

